



TELANGANA SOCIAL WELFARE RESIDENTIAL DEGREE
COLLEGE FOR WOMEN-NIRMAL
DIST:NIRMAL504106



Sri E.VENKATESHWARLU,
MA, B.Ed, M.Phil.
Principal

Mobile: +91-7995660879
E-mail: prl-rdcw-nrml-swrs@telangana.gov.in

METRIC 1.4.1

FEEDBACK FROM STAKEHOLDERS ON THE CURRICULUM

- Letter to Kakatiya University on the Feedback taken
- Feedback Forms
- Feedback Analysis Reports
- Action Taken Reports



**Telangana Social Welfare Residential Degree
College For Women, Nirmal**

Dist: Nirmal 504106

Sri E. Venkateshwarlu
MA, B.Ed, M. Phil.
Principal

Mobile: +91-7995660879
E-Mail: pri-rdcw-nrml-swrs@telangana.gov.in

Nirmal,
12/04/2023.

To
The Dean,
Academic affairs,
Kakatiya University,
Hanamkonda – Warangal.

Sir,

Sub: Submission of the report of analysis - feedback on curriculum from the stakeholders for your kind perusal – Reg.,

with reference to the subject cited above, I, Principal, TSWRDCW-Nirmal would like to submit that we have collected the feedback on curriculum from students, teachers, alumni and employers for the AY 2022-23 and from the feedback it is understood that there is the need for including weightage for project work in the curriculum so that there will be an improvement in the knowledge for research and innovation among students and help them in understanding the advancements in the related field.

This is for your kind perusal as it may help the authorities in designing the curriculum in bringing academic excellency.

Thanking you,

Yours faithfully,

PRINCIPAL
TELANGANA SOCIAL WELFARE
RESIDENTIAL DEGREE COLLEGE
FOR WOMEN: NIRMAL.

Received
S. Hanthi

DEAN
Academic Audit
Kakatiya University
Warangal-506 009. T.S



Telangana Social Welfare Residential Degree
College For Women, Nirmal

Dist: Nirmal 504106

Dr G Sumalatha
M. Tech, Ph.D, NET, SET
Principal

Mobile: +91-7995660879

E-Mail: pri-rcw-nrml-swrs@telangana.gov.in

Nirmal,
06/04/2022.

To
The Dean,
Academic affairs,
Kakatiya University,
Hanamkonda – Warangal.

Sir,

Sub: Submission of the feedback analysis report on curriculum – AY 2021-22 – Reg.,

With reference to the subject cited above, I, Principal, TSWRDCW-Nirmal would like to submit to your kind consideration that we have collected the feedback on curriculum from the stakeholders for the AY 21-22 and analysis have shown the opinion that it would be better if the curriculum includes the syllabus related to post graduate entrance pertaining to all universities so that it would be much more beneficial while preparing for PG entrance examinations. This is for your kind perusal for making any changes during syllabus upgradation for academic excellency.

Thanking you,

Received
[Signature]
DEAN
Academic Audit
Kakatiya University
Warangal-506 009, T.S

[Signature]
Yours faithfully,
PRINCIPAL
TELANGANA SOCIAL WELFARE
RESIDENTIAL DEGREE COLLEGE
FOR WOMEN: NIRMAL.



**Telangana Social Welfare Residential Degree
College For Women, Nirmal**

Dist: Nirmal 504106

Dr G Sumalatha
M. Tech, Ph.D, NET, SET
Principal

Mobile: +91-7995660879

E-Mail: pri-rcdw-nrml-swrs@telangana.gov.in

Nirmal,
10/08/2021.

To
The Dean,
Academic affairs,
Kakatiya University,
Hanamkonda – Warangal.

Sir,

Sub: Submission of the analysis of feedback on curriculum from the stakeholders for AY 2020-21
your kind perusal – Reg.,

I, Principal, Telangana social welfare residential degree college for women-Nirmal would like to bring to your notice that we have collected the feedback on curriculum from the stakeholders and the students have opined that change in question paper pattern for semester examinations have helped them a lot in writing the examinations in view of online classes during the corona pandemic. As the students were from remote places and had difficulty in attending online classes, the change in pattern has helped them.

Thanking you,

*Received
G. Sumalatha*

DEAN
Academic Audit
Kakatiya University
Warangal-506 009, T.S

G. Sumalatha
Yours faithfully,
TELANGANA SOCIAL WELFARE
RESIDENTIAL DEGREE COLLEGE
FOR WOMEN: NIRMAL.



**Telangana Social Welfare Residential Degree
College For Women, Nirmal**

Dist: Nirmal 504106

N. Ganganna
M. A, B.Ed, M.Phil
Principal

Mobile: +91-7995660879
E-Mail:prl-rdcw-nrml-swrs@telangana.gov.in

Nirmal,
10/9/2020.

To
The Dean,
Academic affairs,
Kakatiya University,
Hanamkonda – Warangal.

Sir,

Sub: Submission of the analysis of feedback on curriculum for AY 2019-20 from the stakeholders for your kind perusal – Reg.,

with reference to the subject cited above, I herewith enclose the analysis of feedback for the AY 2019-20 collected from the stakeholders. The analysis is done based on the feedback collected from students, teachers, alumni and employers. Structured questionnaires including questions in different dimensions were prepared and evaluated using a four point scale. Analysis report is as follows,


S.No.	Stakeholder	No. of respondents	Result
1.	Students	450	Excellent
2.	Teachers	22	Excellent
3.	Employers	03	Good
4.	Alumni	22	Good

This is for your kind perusal as it may help the authorities in designing the curriculum in bringing academic excellency.

Thanking you,

*Received
J. H. S. S.*

**DEAN
Academic Audit
Kakatiya University
Warangal-506 009, T.S**


**PRINCIPAL
TELANGANA SOCIAL WELFARE
RESIDENTIAL DEGREE COLLEGE
FOR WOMEN: NIRMAL.**



**Telangana Social Welfare Residential Degree
College For Women, Nirmal**

Dr. Jagdeesh Chandra Sitara
M. A, Ph. D
Principal

Dist: Nirmal 504106

Mobile: +91-7995660879
E-Mail:prl-rdcw-nrml-swrs@telangana.gov.in

Nirmal,
11/04/2019.

To
The Dean,
Academic affairs,
Kakatiya University,
Hanamkonda – Warangal.

Sir,

Sub: Submission of the feedback analysis report on curriculum - AY 2018-19 for your kind perusal
– Reg.,

with reference to the subject cited above, I, Principal, TSWRDCW-Nirmal would like to submit to your kind consideration that we have collected the feedback on curriculum from the stakeholders for the AY 2018-19 and have met with the suggestions to include languages in the final year of undergraduate course so that the students could learn more related to languages and would help them in pursuing post graduation in linguistics more efficiently.
This is for your kind perusal if found useful in developing the curriculum for better academics.

Thanking you,

PRINCIPAL
TELANGANA SOCIAL WELFARE
RESIDENTIAL DEGREE COLLEGE
FOR WOMEN, NIRMAL.

Received
gauthu

DEAN
Academic Audit
Kakatiya University
Warangal-506 009, T.S

TELANGANA SOCIAL WELFARE RESIDENTIAL DEGREE COLLEGE FOR WOMEN NIRMAL

DIST:NIRMAL-504106

Principal Mobile: +91-7995660879

E-mail: prl-rdcw-nrml-swrs@telangana.gov.in

ALUMNI FEEDBACK

Academic Year 2022 - 2023



Name of the Student:				
Year of Graduation:				
(Note: Your valuable feedback is solicited. Please tick (v) in the relevant cell.)				
Parameters	4	3	2	1
	Excellent	Good	Average	Below Average
1. Relevance of courses in curriculum in attaining the required skill competencies to your job				
2. Relevance of the courses in the curriculum and its contents				
3. Relevance of courses in the curriculum in relations to latest technology or emerging trends in industry				
4. Coverage of curriculum in catering to your professional needs				
5. Objectives stated and relevance to the course content				
6. Value added courses offered to you in the curriculum in developing disposition in your career				
7. Relevance of curriculum in career orientation				

Other Suggestions/Comments: _____

Date

Signature of the student

TELANGANA SOCIAL WELFARE RESIDENTIAL DEGREE COLLEGE FOR WOMEN NIRMAL

DIST:NIRMAL-504106

Principal Mobile: +91-7995660879

E-mail: prl-rdcw-nrml-swrs@telangana.gov.in

FEEDBACK FROM EMPLOYERS ON CURRICULUM



The College Placement Cell is actively engaged in providing appropriate employment opportunities to the interested students. For this purpose, companies/organizations are invited in offline and online mode to the college for conducting campus placement drives. The College Placement Cell collects their feedback to determine the companies' level of satisfaction with respect to quality of students participating in the placement drives. Please provide the analysis of the feedback presented questionwise as follows.

(Note: Your valuable feedback is solicited. Please tick (v) in the relevant cell.)

Parameters	4	3	2	1
	Excellent	Good	Average	Below Average
1. Suitability of curriculum design				
2. Relevance of course content to the industrial /organizational needs				
3. Promotion of learning experience of the students for skill development				
4. Focus on projects				
5. Weightage given to Practical and field work component				
6. Ability to contribute to achieve the goals and objectives of the organization				
7. Weightage given to Employability/ Entrepreneurship				
8. Ability to work in a group and leadership skills				
9. Overall rating				

Other Suggestions: _____

Date

Signature

TELANGANA SOCIAL WELFARE RESIDENTIAL DEGREE COLLEGE FOR WOMEN NIRMAL

DIST:NIRMAL-504106

Principal Mobile: +91-7995660879

E-mail: prl-rdcw-nrml-swrs@telangana.gov.in

FEEDBACK FROM STUDENTS ON CURRICULUM

Academic Year 2018 - 2019



Name of the Student:		Class:			
Year/Semester:		Subjects:			
Mobile:		E-mail:			
(Note: Your valuable feedback is solicited. Please tick (v) in the relevant cell.)					
Name of the subject and course on which feedback is given:					
Parameters	4	3	2	1	
	Excellent	Good	Average	Below Average	
1. Applicability/relevance to real life situations & local developmental needs					
2. Weightage given to Employability					
3. Weightage given to Entrepreneurship					
4. Weightage given to Skill Development					
5. Weightage given to Project					
6. Weightage given to Practical and field work component					
7. Inclusion/incorporation of latest advancements in the subject					
8. Difficulty level of course content					
9. Fulfilment of Learning Objectives					
10. Level of Course outcomes					
11. Weightage given to Learning values (in terms of knowledge, concepts, manual skills, analytical abilities and					
12. Quality, Clarity and relevance of textual reading/Reference material/ study material					
13. Creation of interest to pursue higher education					
14. Overall rating					

Suggestions for improvement in curriculum design and development _____

Date

Signature

TELANGANA SOCIAL WELFARE RESIDENTIAL DEGREE COLLEGE FOR WOMEN NIRMAL

DIST:NIRMAL-504106

Principal Mobile: +91-7995660879

E-mail: prl-rdcw-nrml-swrs@telangana.gov.in

FEEDBACK FROM TEACHER ON CURRICULUM

Academic Year 2020- 2021



Name of the Teacher:				
Designation:		Department:		
Name of the College/University:				
Mobile:		E-mail:		
(Note: Your valuable feedback is solicited. Please tick (v) in the relevant cell.)				
Name of the subject and course on which feedback is given:				
Parameters	4	3	2	1
	Excellent	Good	Average	Below Average
1. Applicability/relevance to real life situations & local developmental needs				
2. Weightage given to Employability				
3. Weightage given to Entrepreneurship				
4. Weightage given to Skill Development				
5. Weightage given to Project				
6. Weightage given to Practical and field work component				
7. Depth of the course content				
8. Inclusion/incorporation of latest advancements in the subject				
9. Difficulty level of course content				
10. Optimization of course content				
11. Relevance of learning objectives of the syllabus				
12. Relevance of Course outcomes				
13. Weightage given to Learning values (in terms of knowledge, concepts, manual skills, analytical abilities and broadening				
14. Quality, Clarity and relevance of textual reading / Referencematerial / Study material				
15. Overall rating				

Suggestions for improvement in curriculum design and development _____

Date

Signature

Report on Analysis of Feedback on Curriculum Collected from Students


Students feedback on curriculum is made with an aim to study the responses of students on various aspects of curriculum such as difficulty level of course content, fulfillment of learning objectives, incorporation of latest advancements in the subject, skill development etc.,

Methodology:

The feedback from students is obtained through structured questionnaire which included 14 questions in various dimensions.

Students' feedback on curriculum is evaluated using a format consisting of 14 dimensions on a four point scale. The assigned weights are Excellent-4, Good-3, Average-2, Below Average-1.




PRINCIPAL
TELANGANA SOCIAL WELFARE
RESIDENTIAL DEGREE COLLEGE
FOR WOMEN: NIRMAL.

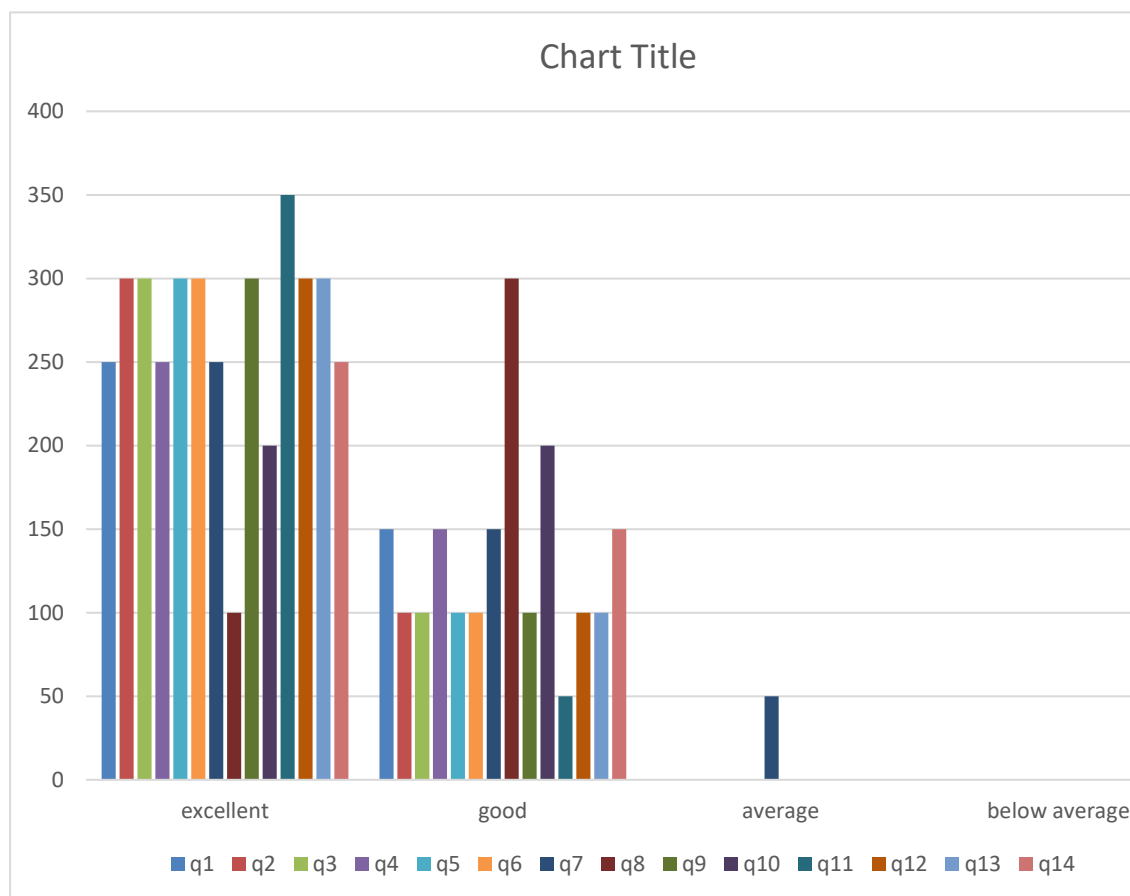
Academic Year 2022-23
Number of Respondents – 400

Students' feedback on curriculum is evaluated using a format consisting of 14 dimensions on a four point scale. The assigned weights are Excellent-4, Good-3, Average-2, Below Average-1. The responses of the students for the academic year 2022-23 are collected and tabulated and the conclusions are presented below.

Table 1 : Students' Feedback on Curriculum

Parameters	4	3	2	1
	Excellent	Good	Average	Below Average
1. Applicability/relevance to real life situations & local developmental needs	250	150	0	0
2. Weightage given to Employability	300	100	0	0
3. Weightage given to Entrepreneurship	300	100	0	0
4. Weightage given to Skill Development	250	150	0	0
5. Weightage given to Project	300	100	0	0
6. Weightage given to Practical and field work component	300	100	0	0
7. Inclusion/incorporation of latest advancements in the subject	200	150	50	0
8. Difficulty level of course content	100	300	0	0
9. Fulfilment of Learning Objectives	300	100	0	0
10. Level of Course outcomes	200	200	0	0
11. Weightage given to Learning values (in terms of knowledge, concepts, manual skills, analytical abilities and broadening perspectives)	350	50	0	0
12. Quality, Clarity and relevance of textual reading/Reference material/ study material	300	100	0	0
13. Creation of interest to pursue higher education	300	100	0	0
14. Overall rating	250	150	0	0

Graph 1: Students' Feedback Analysis



The consolidated results of students' feedback on curriculum for the academic year 2022-23 are shown in Table-1 and Graph-1. Results reveal that the mean score lies in the range of Excellent.



[Handwritten Signature]
PRINCIPAL
TELANGANA SOCIAL WELFARE
RESIDENTIAL DEGREE COLLEGE
FOR WOMEN: NIRMAL.

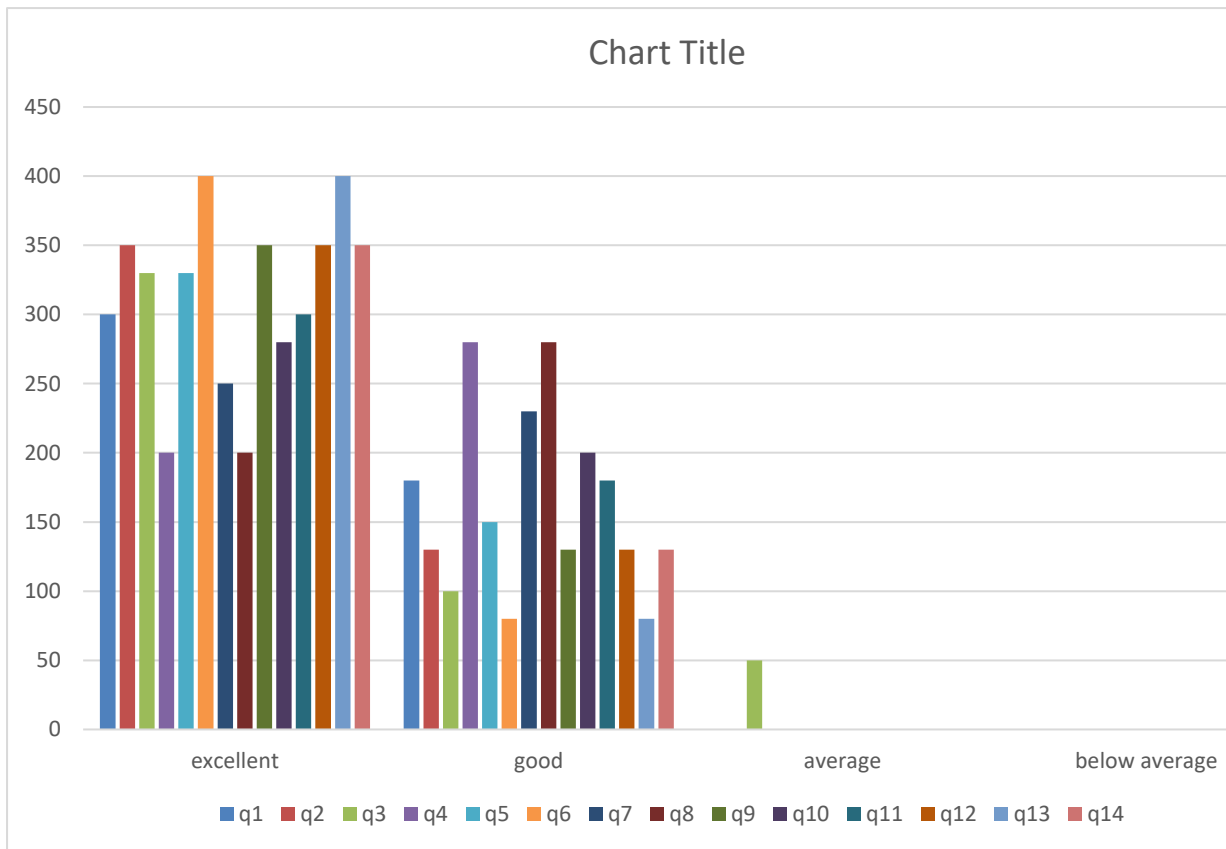
Academic Year 2021-22
Number of Respondents – 480

Students' feedback on curriculum is evaluated using a format consisting of 14 dimensions on a four point scale. The assigned weights are Excellent-4, Good-3, Average-2, Below Average-1. The responses of the students for the academic year 2021-22 are collected and tabulated and the conclusions are presented below.

Table 2 : Students' Feedback on Curriculum

Parameters	4	3	2	1
	Excellent	Good	Average	Below Average
1. Applicability/relevance to real life situations & local developmental needs	300	180	0	0
2. Weightage given to Employability	350	130	0	0
3. Weightage given to Entrepreneurship	330	100	50	0
4. Weightage given to Skill Development	200	280	0	0
5. Weightage given to Project	330	150	0	0
6. Weightage given to Practical and field work component	400	80	0	0
7. Inclusion/incorporation of latest advancements in the subject	250	230	0	0
8. Difficulty level of course content	200	280	0	0
9. Fulfilment of Learning Objectives	350	130	0	0
10. Level of Course outcomes	280	200	0	0
11. Weightage given to Learning values (in terms of knowledge, concepts, manual skills, analytical abilities and broadening perspectives)	300	180	0	0
12. Quality, Clarity and relevance of textual reading/Reference material/ study material	350	130	0	0
13. Creation of interest to pursue higher education	400	80	0	0
14. Overall rating	350	130	0	0

Graph 2: Students' Feedback Analysis



The consolidated results of students' feedback on curriculum for the academic year 2021-22 are shown in Table-2 and Graph-2. Results reveal that the mean score lies in the range of Excellent.



[Handwritten Signature]
PRINCIPAL
TELANGANA SOCIAL WELFARE
RESIDENTIAL DEGREE COLLEGE
FOR WOMEN: NIRMAL.

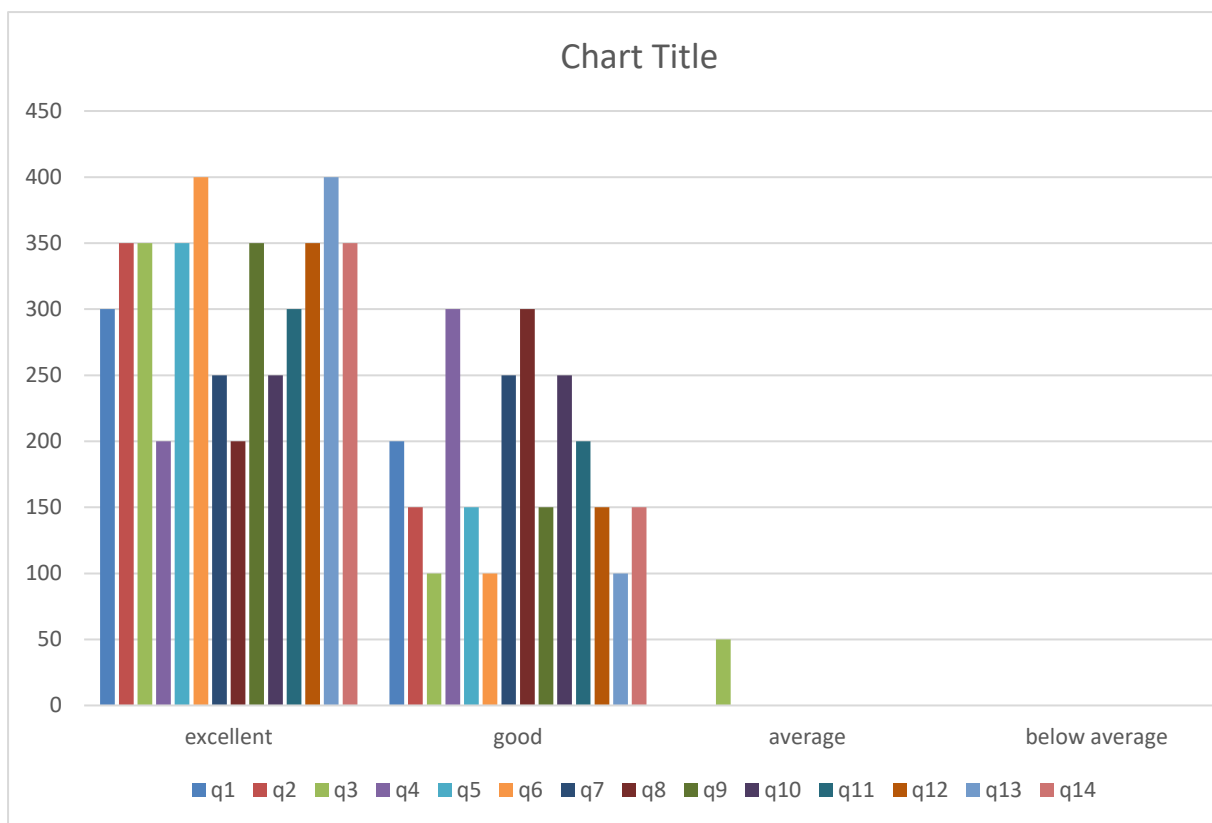
Academic Year 2020-21
Number of Respondents – 500

Students' feedback on curriculum is evaluated using a format consisting of 14 dimensions on a four point scale. The assigned weights are Excellent-4, Good-3, Average-2, Below Average-1. The responses of the students for the academic year 2020-21 are collected and tabulated and the conclusions are presented below.

Table 3:Students' Feedback on Curriculum

Parameters	4	3	2	1
	Excellent	Good	Average	Below Average
1. Applicability/relevance to real life situations & local developmental needs	300	200	0	0
2. Weightage given to Employability	350	150	0	0
3. Weightage given to Entrepreneurship	350	100	50	0
4. Weightage given to Skill Development	200	300	0	0
5. Weightage given to Project	350	150	0	0
6. Weightage given to Practical and field work component	400	100	0	0
7. Inclusion/incorporation of latest advancements in the subject	250	250	0	0
8. Difficulty level of course content	200	300	0	0
9. Fulfilment of Learning Objectives	350	150	0	0
10. Level of Course outcomes	250	250	0	0
11. Weightage given to Learning values (in terms of knowledge, concepts, manual skills, analytical abilities and broadening perspectives)	300	200	0	0
12. Quality, Clarity and relevance of textual reading/Reference material/ study material	350	150	0	0
13. Creation of interest to pursue higher education	400	100	0	0
14. Overall rating	350	150	0	0

Graph 3: Students' Feedback Analysis



The consolidated results of students' feedback on curriculum for the academic year 2020-21 are shown in Table-3 and Graph-3. Results reveal that the mean score lies in the range of Excellent.



[Signature]
PRINCIPAL
TELANGANA SOCIAL WELFARE
RESIDENTIAL DEGREE COLLEGE
FOR WOMEN: NIRMAL.

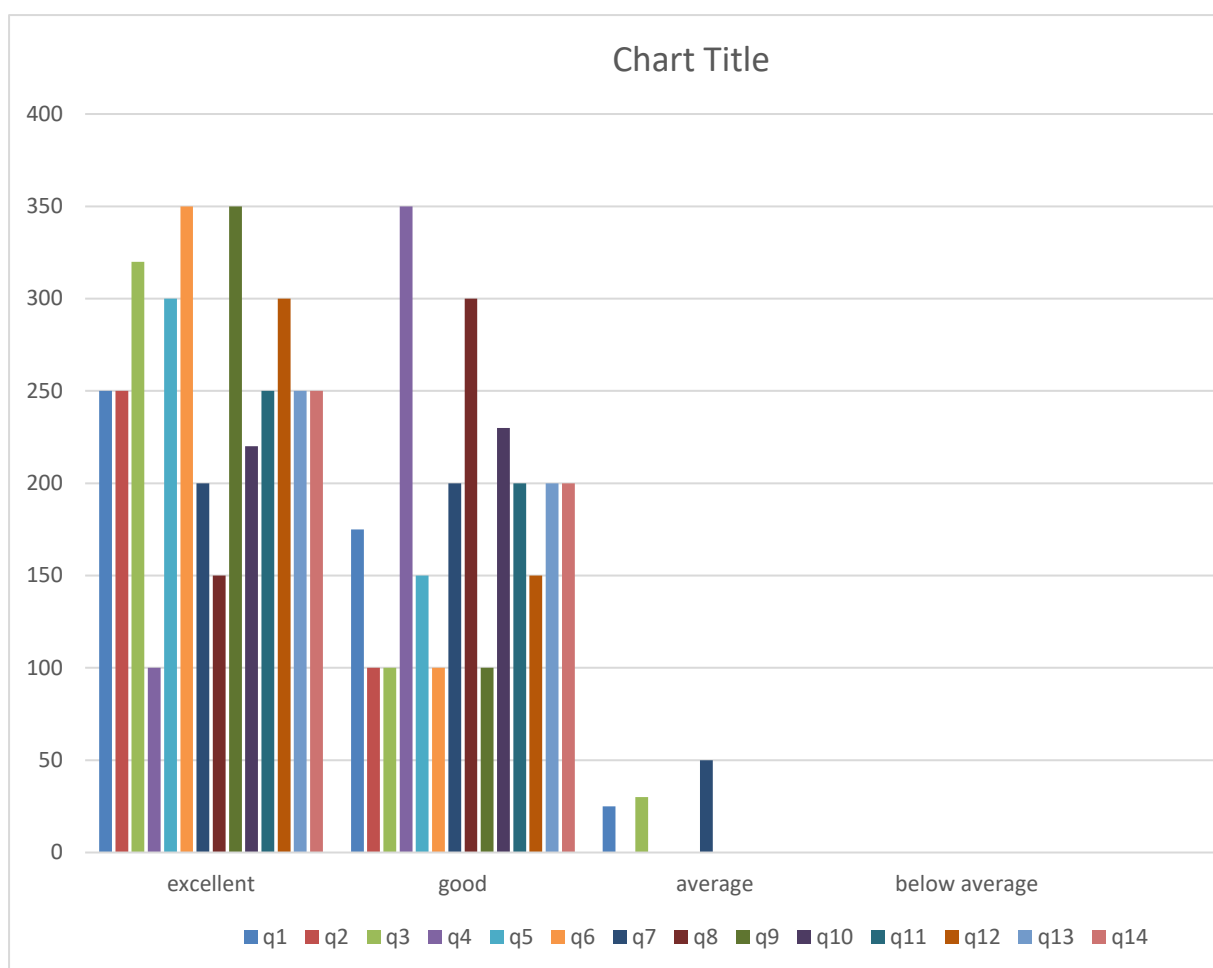
Academic Year 2019-20
Number of Respondents – 450

Students' feedback on curriculum is evaluated using a format consisting of 14 dimensions on a four point scale. The assigned weights are Excellent-4, Good-3, Average-2, Below Average-1. The responses of the students for the academic year 2019-20 are collected and tabulated and the conclusions are presented below.

Table 4: Students' Feedback on Curriculum

Parameters	4	3	2	1
	Excellent	Good	Average	Below Average
1. Applicability/relevance to real life situations & local developmental needs	250	175	25	0
2. Weightage given to Employability	350	100	0	0
3. Weightage given to Entrepreneurship	320	100	30	0
4. Weightage given to Skill Development	100	350	0	0
5. Weightage given to Project	300	150	0	0
6. Weightage given to Practical and field work component	350	100	0	0
7. Inclusion/incorporation of latest advancements in the subject	200	200	50	0
8. Difficulty level of course content	150	300	0	0
9. Fulfilment of Learning Objectives	350	100	0	0
10. Level of Course outcomes	220	230	0	0
11. Weightage given to Learning values (in terms of knowledge, concepts, manual skills, analytical abilities and broadening perspectives)	250	200	0	0
12. Quality, Clarity and relevance of textual reading/Reference material/ study material	300	150	0	0
13. Creation of interest to pursue higher education	250	200	0	0
14. Overall rating	250	200	0	0

Graph 4: Students' Feedback Analysis



The consolidated results of students' feedback on curriculum for the academic year 2019-20 are shown in Table-4 and Graph-4. Results reveal that the mean score lies in the range of Excellent.



[Handwritten Signature]
**PRINCIPAL
 TELANGANA SOCIAL WELFARE
 RESIDENTIAL DEGREE COLLEGE
 FOR WOMEN: NIRMAL.**

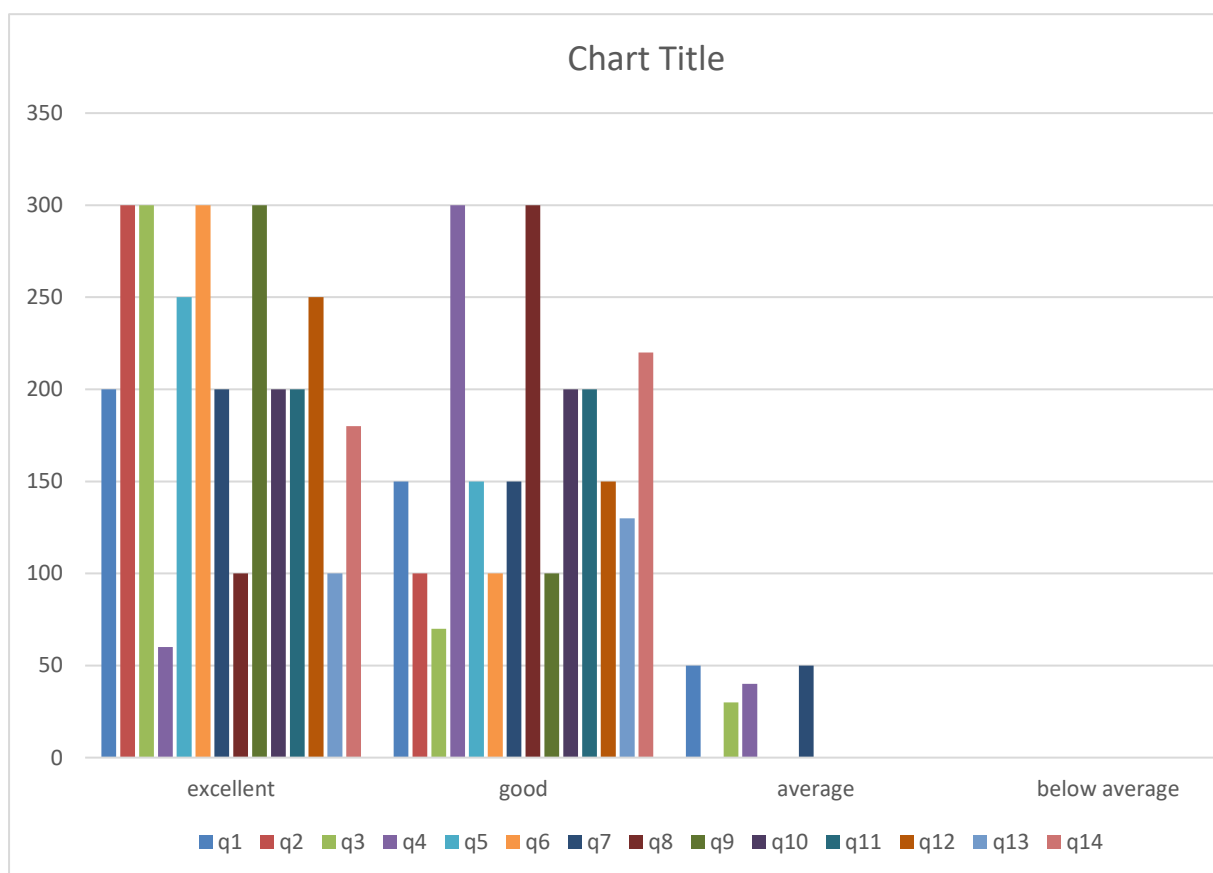
Academic Year 2018-19
Number of Respondents – 400

Students' feedback on curriculum is evaluated using a format consisting of 14 dimensions on a four point scale. The assigned weights are Excellent-4, Good-3, Average-2, Below Average-1. The responses of the students for the academic year 2019-20 are collected and tabulated and the conclusions are presented below.

Table 5: Students' Feedback on Curriculum

Parameters	4	3	2	1
	Excellent	Good	Average	Below Average
1. Applicability/relevance to real life situations & local developmental needs	200	150	50	0
2. Weightage given to Employability	300	100	0	0
3. Weightage given to Entrepreneurship	300	70	30	0
4. Weightage given to Skill Development	60	300	40	0
5. Weightage given to Project	250	150	0	0
6. Weightage given to Practical and field work component	300	100	0	0
7. Inclusion/incorporation of latest advancements in the subject	200	150	50	0
8. Difficulty level of course content	100	300	0	0
9. Fulfilment of Learning Objectives	300	100	0	0
10. Level of Course outcomes	200	200	0	0
11. Weightage given to Learning values (in terms of knowledge, concepts, manual skills, analytical abilities and broadening perspectives)	200	200	0	0
12. Quality, Clarity and relevance of textual reading/Reference material/ study material	250	150	0	0
13. Creation of interest to pursue higher education	100	300	0	0
14. Overall rating	180	220	0	0

Graph 5: Students' Feedback Analysis



The consolidated results of students' feedback on curriculum for the academic year 2018-19 are shown in Table-5 and Graph-5. Results reveal that the mean score lies in the range of Good.



[Handwritten Signature]
PRINCIPAL
TELANGANA SOCIAL WELFARE
RESIDENTIAL DEGREE COLLEGE
FOR WOMEN: NIRMAL.

Report on Analysis of Feedback on Curriculum Collected from Teachers

Teacher's feedback on curriculum is made with a purpose to examine the views of teachers' on curriculum to fulfill the professional needs, attaining the program outcomes, meeting the emerging needs of industry, facilities for developing the course content, relevance of courses and usefulness of training given to the teachers.

The feedback from teachers is obtained through structured questionnaire which included 15 questions on dimensions related to effectiveness on curriculum.

A four point scale with weights Excellent-4, Good-3, Average-2 and Below average-1 are assigned.



**PRINCIPAL
TELANGANA SOCIAL WELFARE
RESIDENTIAL DEGREE COLLEGE
FOR WOMEN: NIRMAL.**

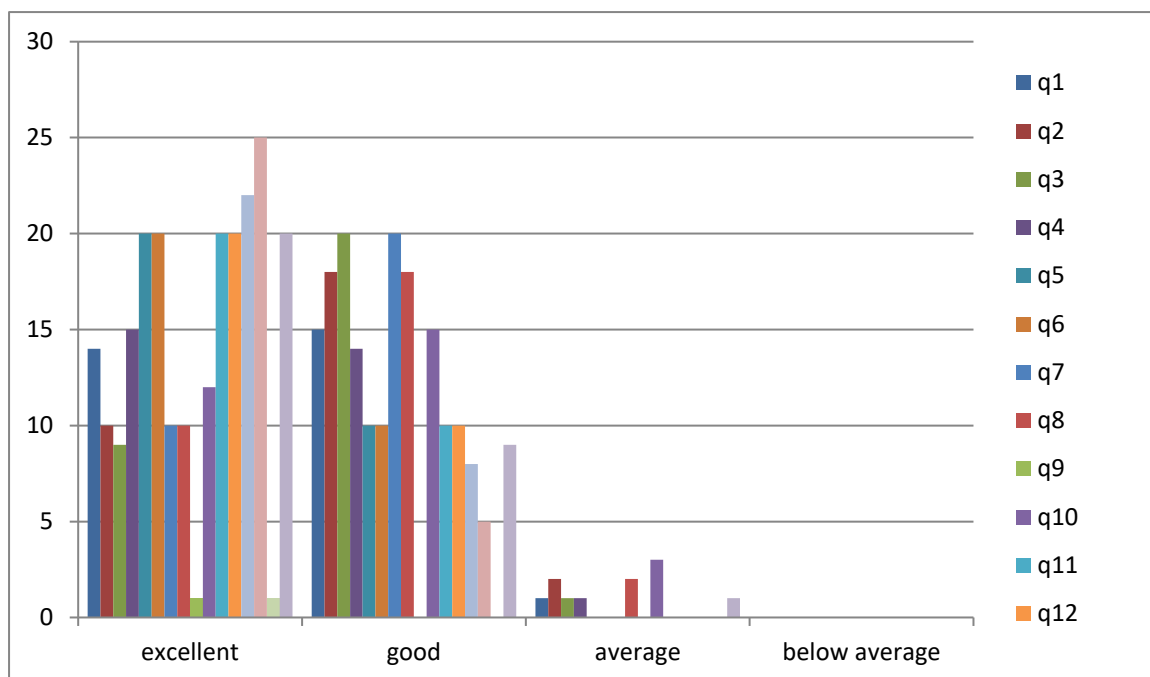
Academic Year 2022-23
Number of Respondents – 30

Teachers' feedback on curriculum is evaluated using a format consisting of 15 dimensions on a four point scale. The assigned weights are Excellent-4, Good-3, Average-2, Below Average-1. The responses of the students for the academic year 2022-23 are collected and tabulated and the conclusions are presented below.

Table 1: Teachers' Feedback on Curriculum

Parameters	4	3	2	1
	Excellent	Good	Average	Below Average
1. Applicability/relevance to real life situations & local developmental needs	14	15	1	0
2. Weightage given to Employability	10	18	2	0
3. Weightage given to Entrepreneurship	9	20	1	0
4. Weightage given to Skill Development	15	14	1	0
5. Weightage given to Project	20	10	0	0
6. Weightage given to Practical and field work component	20	10	0	0
7. Depth of the course content	10	20	0	0
8. Inclusion/incorporation of latest advancements in the subject	10	18	2	0
9. Difficulty level of course content	12	15	3	0
10. Optimization of course content	10	15	5	0
11. Relevance of learning objectives of the syllabus	20	10	0	0
12. Relevance of Course outcomes	20	10	0	0
13. Weightage given to Learning values (in terms of knowledge, concepts, manual skills, analytical abilities and broadening perspectives)	22	8	0	0
14. Quality, Clarity and relevance of textual reading / Referencematerial / Study material	25	5	0	0
15. Overall rating	20	9	1	0

Graph 1: Teachers' Feedback Analysis



The consolidated result of Teacher's feedback on curriculum for the academic year 2022-23 shown in Table 1 and Graph 1 reveal that the teachers have given an excellent rating to the coverage of the curriculum, good to the incorporation of latest advancement in the curriculum, excellent to the practical and field work component.



[Signature]
PRINCIPAL
TELANGANA SOCIAL WELFARE
RESIDENTIAL DEGREE COLLEGE
FOR WOMEN: NIRMAL.

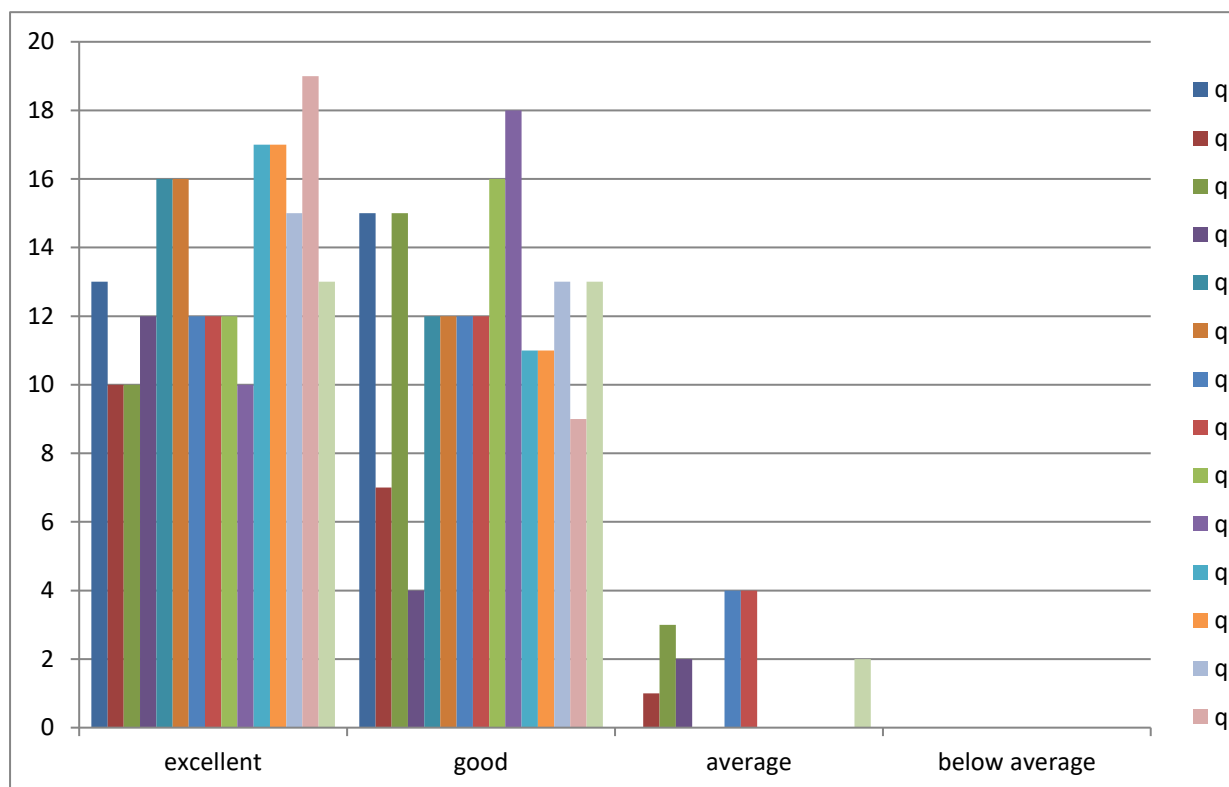
Academic Year 2021-22
Number of Respondents – 28

Teachers' feedback on curriculum is evaluated using a format consisting of 15 dimensions on a four point scale. The assigned weights are Excellent-4, Good-3, Average-2, Below Average-1. The responses of the students for the academic year 2021-22 are collected and tabulated and the conclusions are presented below.

Table 2: Teachers' Feedback on Curriculum


Parameters	4	3	2	1
	Excellent	Good	Average	Below Average
1. Applicability/relevance to real life situations & local developmental needs	13	15	0	0
2. Weightage given to Employability	10	17	1	0
3. Weightage given to Entrepreneurship	10	15	3	0
4. Weightage given to Skill Development	12	14	2	0
5. Weightage given to Project	16	12	0	0
6. Weightage given to Practical and field work component	16	12	0	0
7. Depth of the course content	12	12	4	0
8. Inclusion/incorporation of latest advancements in the subject	12	12	4	0
9. Difficulty level of course content	12	16	0	0
10. Optimization of course content	10	18	0	0
11. Relevance of learning objectives of the syllabus	17	11	0	0
12. Relevance of Course outcomes	17	11	0	0
13. Weightage given to Learning values (in terms of knowledge, concepts, manual skills, analytical abilities and broadening perspectives)	15	13	0	0
14. Quality, Clarity and relevance of textual reading / Referencematerial / Study material	19	9	0	0
15. Overall rating	13	13	2	0

Graph 2: Teachers' Feedback Analysis



The consolidated result of Teacher's feedback on curriculum for the academic year 2021-22 shown in Table 2 and Graph 2 reveal that the teachers have given an excellent rating to the coverage of the curriculum, equal rating to excellent & good to the incorporation of latest advancement in the curriculum, excellent to the practical and field work component.




PRINCIPAL
TELANGANA SOCIAL WELFARE
RESIDENTIAL DEGREE COLLEGE
FOR WOMEN: NIRMAL.

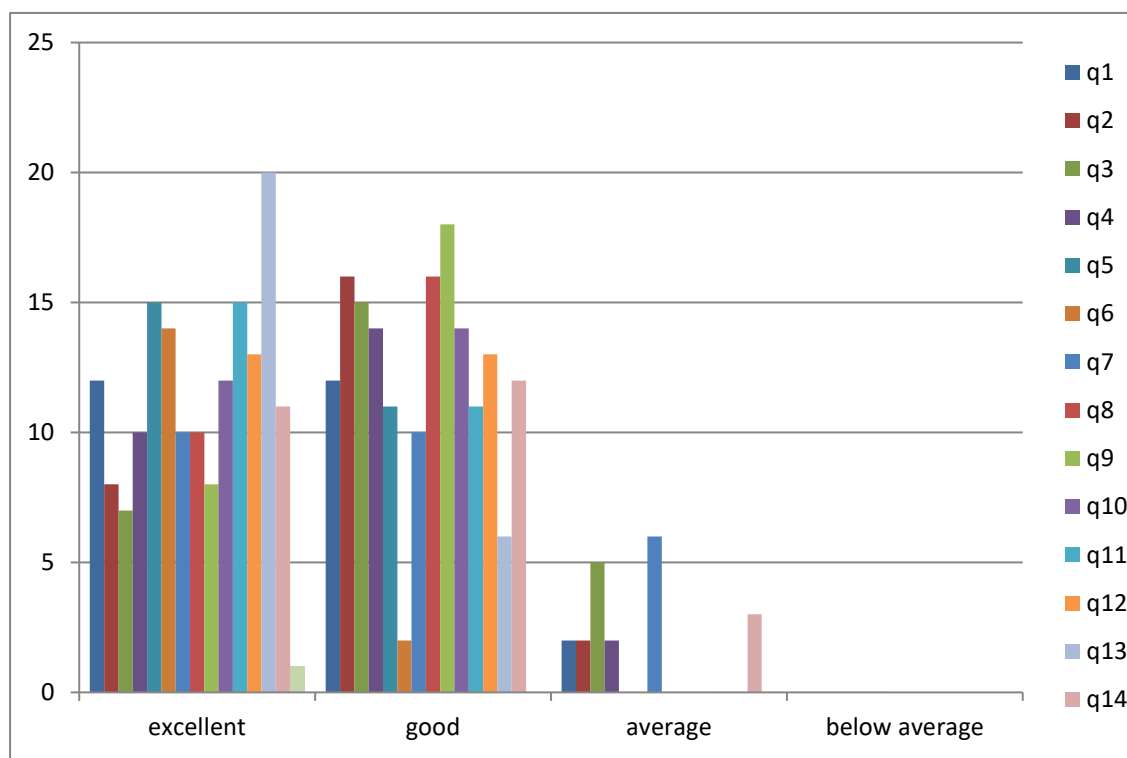
Academic Year 2020-21
Number of Respondents – 26

Teachers' feedback on curriculum is evaluated using a format consisting of 15 dimensions on a four point scale. The assigned weights are Excellent-4, Good-3, Average-2, Below Average-1. The responses of the students for the academic year 2020-21 are collected and tabulated and the conclusions are presented below.

Table 3: Teachers' Feedback on Curriculum

Parameters	4	3	2	1
	Excellent	Good	Average	Below Average
1. Applicability/relevance to real life situations & local developmental needs	12	12	0	0
2. Weightage given to Employability	8	16	2	0
3. Weightage given to Entrepreneurship	7	15	5	0
4. Weightage given to Skill Development	10	14	2	0
5. Weightage given to Project	15	11	0	0
6. Weightage given to Practical and field work component	14	12	0	0
7. Depth of the course content	10	10	6	0
8. Inclusion/incorporation of latest advancements in the subject	10	16	0	0
9. Difficulty level of course content	8	18	0	0
10. Optimization of course content	12	14	0	0
11. Relevance of learning objectives of the syllabus	15	11	0	0
12. Relevance of Course outcomes	15	11	0	0
13. Weightage given to Learning values (in terms of knowledge, concepts, manual skills, analytical abilities and broadening perspectives)	13	13	0	0
14. Quality, Clarity and relevance of textual reading / Referencematerial / Study material	20	6	0	0
15. Overall rating	11	12	3	0

Graph 3: Teachers' Feedback Analysis



The consolidated result of Teacher's feedback on curriculum for the academic year 2020-21 shown in Table 3 and Graph 3 reveal that the teachers have given an excellent rating to the coverage of the curriculum, good to the incorporation of latest advancement in the curriculum, excellent to the practical and field work component



[Handwritten Signature]
PRINCIPAL
TELANGANA SOCIAL WELFARE
RESIDENTIAL DEGREE COLLEGE
FOR WOMEN: NIRMAL.

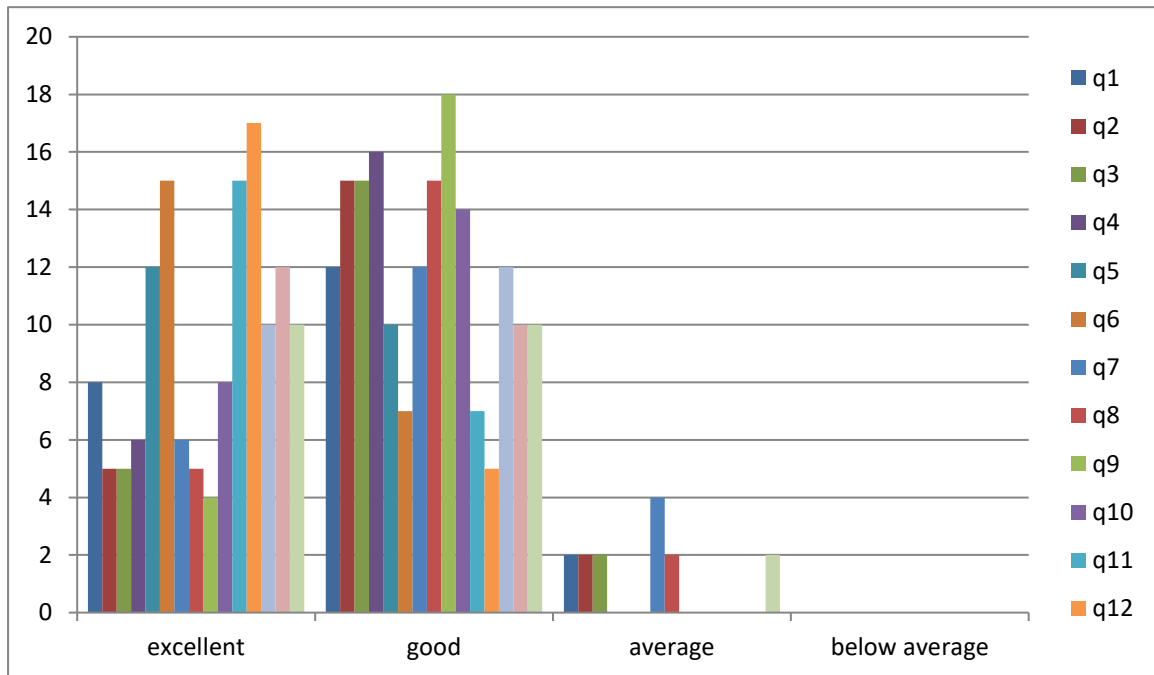
Academic Year 2019-20
Number of Respondents – 22

Teachers' feedback on curriculum is evaluated using a format consisting of 15 dimensions on a four point scale. The assigned weights are Excellent-4, Good-3, Average-2, Below Average-1. The responses of the students for the academic year 2019-20 are collected and tabulated and the conclusions are presented below.

Table 4: Teachers' Feedback on Curriculum

Parameters	4	3	2	1
	Excellent	Good	Average	Below Average
1. Applicability/relevance to real life situations & local developmental needs	8	12	2	0
2. Weightage given to Employability	5	15	2	0
3. Weightage given to Entrepreneurship	5	15	2	0
4. Weightage given to Skill Development	6	16	0	0
5. Weightage given to Project	12	10	0	0
6. Weightage given to Practical and field work component	15	7	0	0
7. Depth of the course content	6	12	4	0
8. Inclusion/incorporation of latest advancements in the subject	5	15	2	0
9. Difficulty level of course content	4	18	0	0
10. Optimization of course content	8	14	0	0
11. Relevance of learning objectives of the syllabus	15	7	0	0
12. Relevance of Course outcomes	17	5	0	0
13. Weightage given to Learning values (in terms of knowledge, concepts, manual skills, analytical abilities and broadening perspectives)	10	12	0	0
14. Quality, Clarity and relevance of textual reading / Referencematerial / Study material	12	10	0	0
15. Overall rating	10	10	2	0

Graph 4: Teachers' Feedback Analysis



The consolidated result of Teacher's feedback on curriculum for the academic year 2019-20 shown in Table 4 and Graph 4 reveal that the teachers have given an excellent rating to the coverage of the curriculum, good to the incorporation of latest advancement in the curriculum, excellent to the practical and field work component



[Handwritten Signature]
PRINCIPAL
TELANGANA SOCIAL WELFARE
RESIDENTIAL DEGREE COLLEGE
FOR WOMEN: NIRMAL.

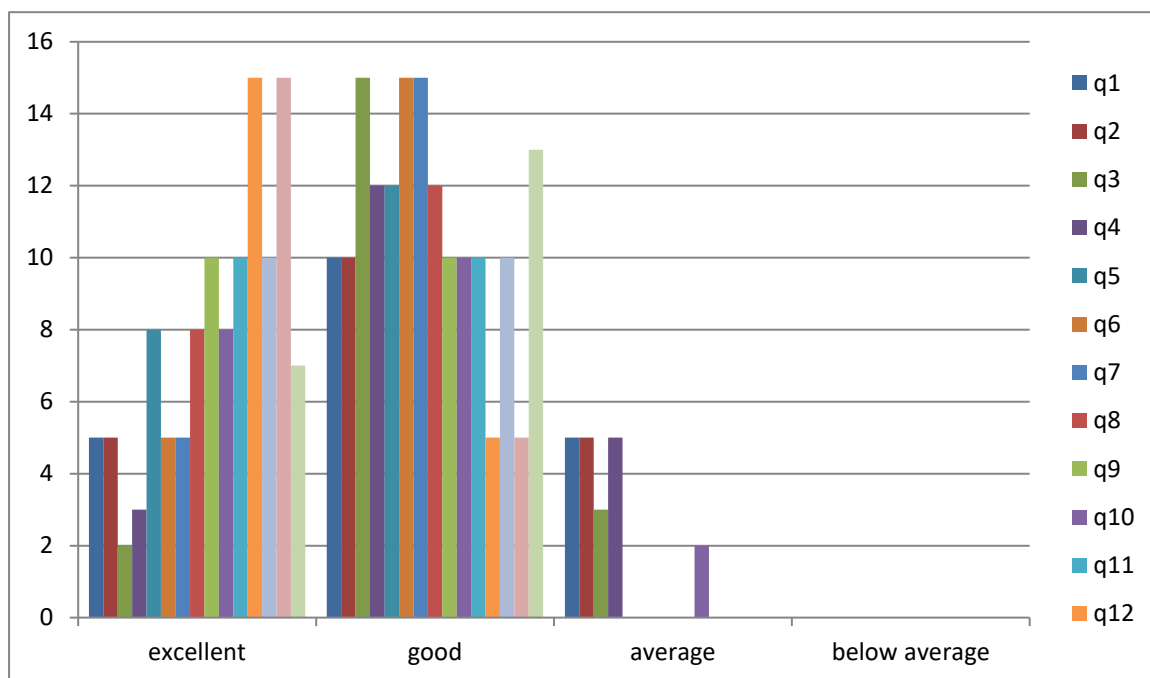
Academic Year 2018-19
Number of Respondents – 20

Teachers' feedback on curriculum is evaluated using a format consisting of 15 dimensions on a four point scale. The assigned weights are Excellent-4, Good-3, Average-2, Below Average-1. The responses of the students for the academic year 2018-19 are collected and tabulated and the conclusions are presented below.

Table 5: Teachers' Feedback on Curriculum

Parameters	4	3	2	1
	Excellent	Good	Average	Below Average
1. Applicability/relevance to real life situations & local developmental needs	5	10	5	0
2. Weightage given to Employability	5	10	5	0
3. Weightage given to Entrepreneurship	2	15	3	0
4. Weightage given to Skill Development	3	12	5	0
5. Weightage given to Project	8	12	0	0
6. Weightage given to Practical and field work component	5	15	0	0
7. Depth of the course content	5	15	0	0
8. Inclusion/incorporation of latest advancements in the subject	8	12	0	0
9. Difficulty level of course content	10	10	0	0
10. Optimization of course content	8	10	2	0
11. Relevance of learning objectives of the syllabus	10	10	0	0
12. Relevance of Course outcomes	15	5	0	0
13. Weightage given to Learning values (in terms of knowledge, concepts, manual skills, analytical abilities and broadening perspectives)	10	10	0	0
14. Quality, Clarity and relevance of textual reading / Referencematerial / Study material	15	5	0	0
15. Overall rating	7	13	0	0

Graph 5: Teachers' Feedback Analysis



The consolidated result of Teacher's feedback on curriculum for the academic year 2018-19 shown in Table 5 and Graph 5 reveal that the teachers have given an good rating to the coverage of the curriculum, good to the incorporation of latest advancement in the curriculum, good to the practical and field work component.



[Handwritten Signature]
PRINCIPAL
TELANGANA SOCIAL WELFARE
RESIDENTIAL DEGREE COLLEGE
FOR WOMEN: NIRMAL.

Report on Analysis of Feedback on Curriculum Collected from Employers


Employers feedback on curriculum allows them to comment on various aspects like suitability of curriculum design for the employability/to fulfill the professional needs and skill development etc.,. This provides us with valuable suggestions for further improvement of the overall performance of the college with the betterment of infrastructure and other aspects.

Methodology

The feedback Employers is obtained through structured questionnaire which included 07 questions on various aspects related to curriculum for employability.

A four point scale with weights Excellent-4, Good-3, Average-2 and Below average-1 are assigned.




**PRINCIPAL
TELANGANA SOCIAL WELFARE
RESIDENTIAL DEGREE COLLEGE
FOR WOMEN: NIRMAL.**

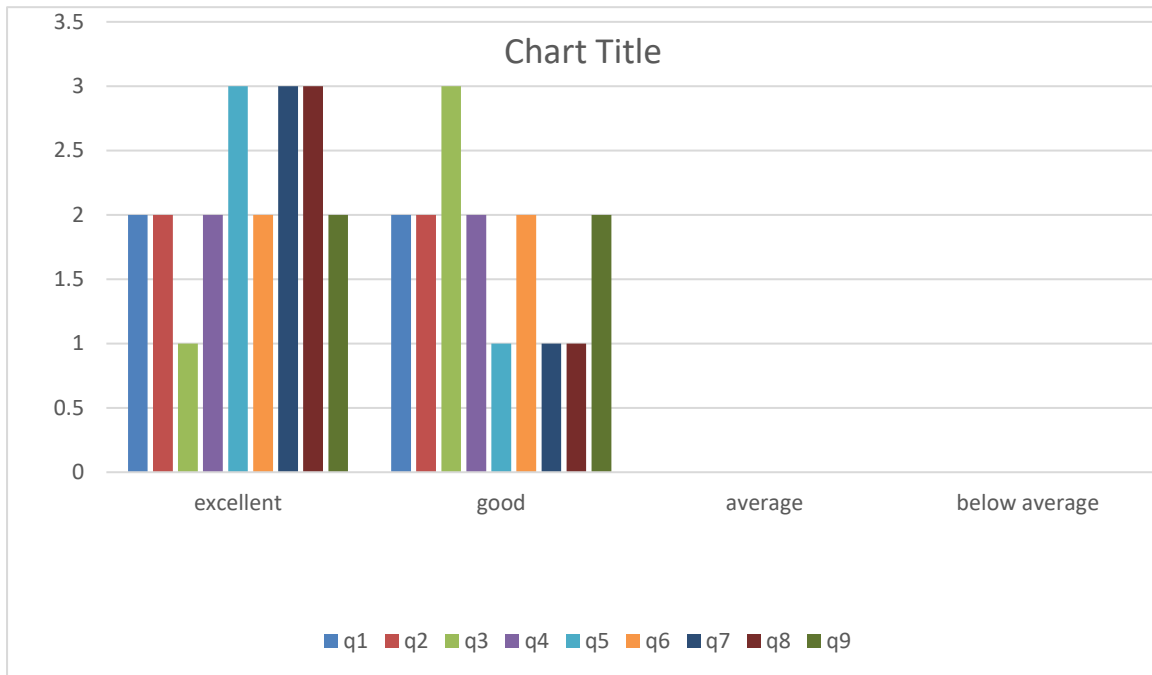
Academic Year 2022-23
Number of Respondents – 04

Employers' feedback on curriculum is evaluated using a format consisting of 7 dimensions on a four point scale. The assigned weights are Excellent-4, Good-3, Average-2, Below Average-1. The responses of the employers for the academic year 2022-23 are collected and tabulated and the conclusions are presented below.

Table 1: Employers' Feedback on Curriculum

Parameters	4	3	2	1
	Excellent	Good	Average	Below Average
1. Suitability of curriculum design	2	2	0	0
2. Relevance of course content to the industrial /organizational needs	2	2	0	0
3. Promotion of learning experience of the students for skill development	1	3	0	0
4. Focus on projects	2	2	0	0
5. Weightage given to Practical and field work component	3	1	0	0
6. Ability to contribute to achieve the goals and objectives of the organization	2	2	0	0
7. Weightage given to Employability/ Entrepreneurship	3	1	0	0
8. Ability to work in a group and leadership skills	3	1	0	0
9. Overall rating	2	2	0	0

Graph 1: Employers' Feedback Analysis



The consolidated result of Employer’s feedback on curriculum for the academic year 2022-23 shown in Table 1 and Graph 1 reveal that the employers have given a good rating to the learning experience of students for the skill development, excellent rating to employability or entrepreneurship.



[Handwritten Signature]
PRINCIPAL
TELANGANA SOCIAL WELFARE
RESIDENTIAL DEGREE COLLEGE
FOR WOMEN: NIRMAL.

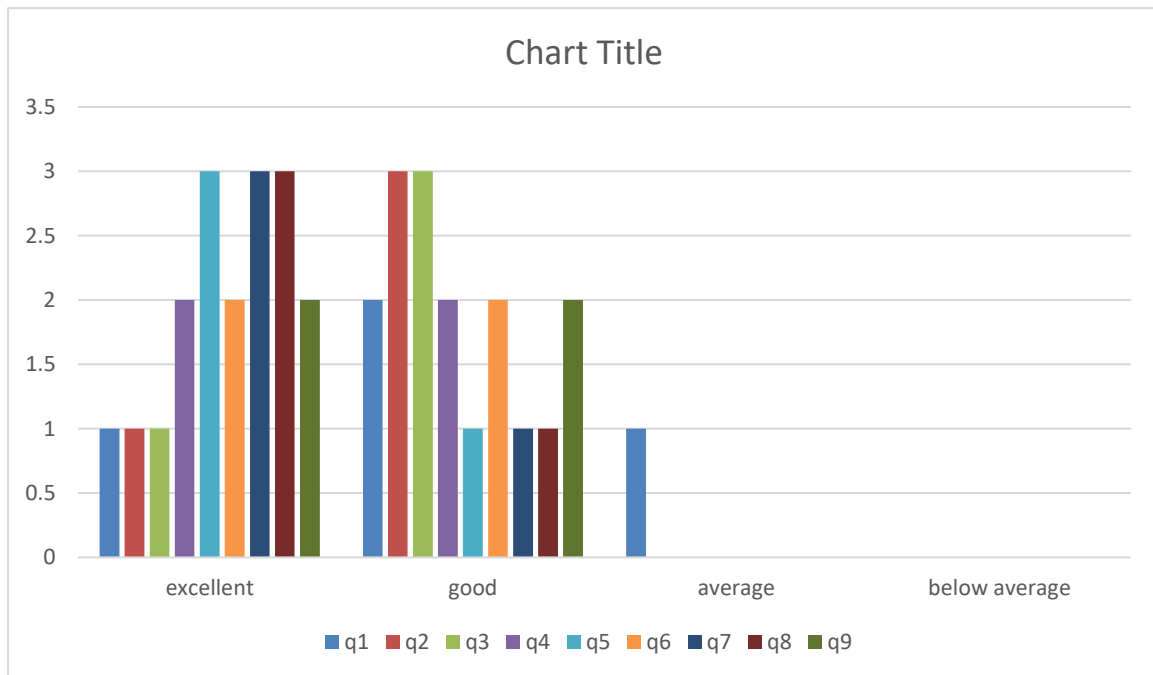
Academic Year 2021-22
Number of Respondents – 04

Employers' feedback on curriculum is evaluated using a format consisting of 7 dimensions on a four point scale. The assigned weights are Excellent-4, Good-3, Average-2, Below Average-1. The responses of the employers for the academic year 2021-22 are collected and tabulated and the conclusions are presented below.

Table 2: Employers' Feedback on Curriculum

Parameters	4	3	2	1
	Excellent	Good	Average	Below Average
1. Suitability of curriculum design	1	2	1	0
2. Relevance of course content to the industrial /organizational needs	1	3	0	0
3. Promotion of learning experience of the students for skill development	1	3	0	0
4. Focus on projects	2	2	0	0
5. Weightage given to Practical and field work component	3	1	0	0
6. Ability to contribute to achieve the goals and objectives of the organization	2	2	0	0
7. Weightage given to Employability/ Entrepreneurship	3	1	0	0
8. Ability to work in a group and leadership skills	3	1	0	0
9. Overall rating	2	2	0	0

Graph 2: Employers' Feedback Analysis



The consolidated result of Employer's feedback on curriculum for the academic year 2021-22 shown in Table 2 and Graph 2 reveal that the employers have given a good rating to the learning experience of students for the skill development, excellent rating to employability or entrepreneurship.



PRINCIPAL
TELANGANA SOCIAL WELFARE
RESIDENTIAL DEGREE COLLEGE
FOR WOMEN: NIRMAL.

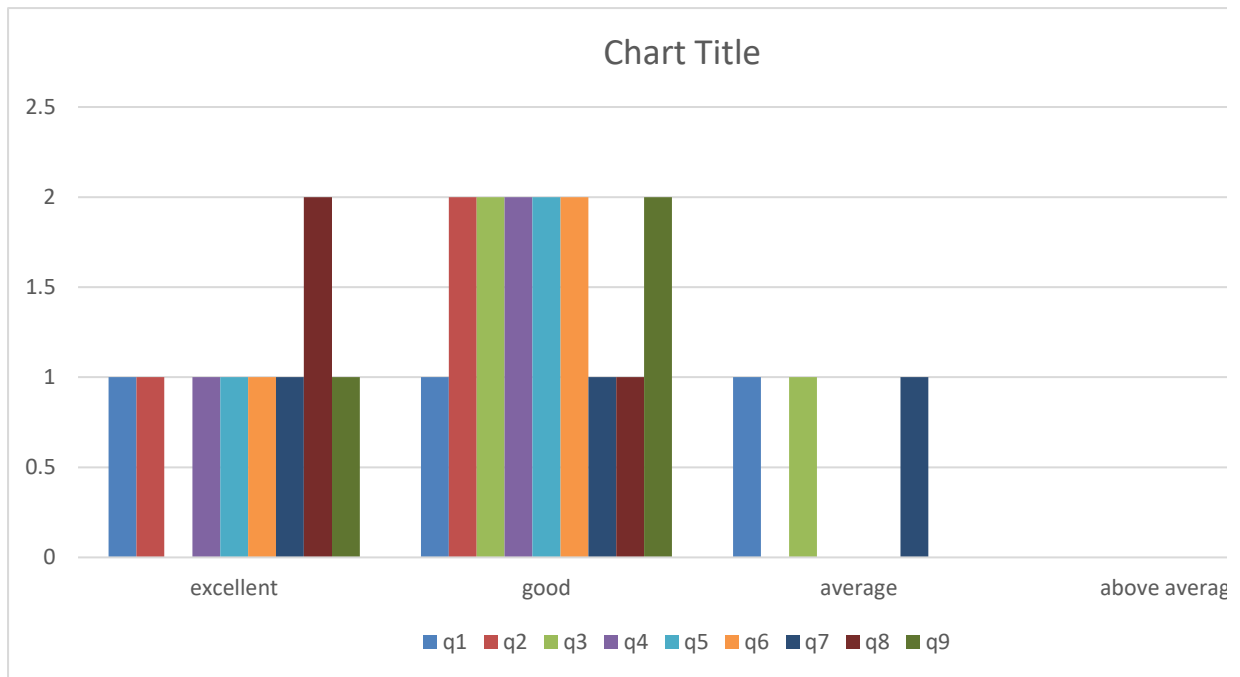
Academic Year 2020-21
Number of Respondents – 03

Employers' feedback on curriculum is evaluated using a format consisting of 7 dimensions on a four point scale. The assigned weights are Excellent-4, Good-3, Average-2, Below Average-1. The responses of the employers for the academic year 2020-21 are collected and tabulated and the conclusions are presented below.

Table 3: Employers' Feedback on Curriculum

Parameters	4	3	2	1
	Excellent	Good	Average	Below Average
1. Suitability of curriculum design	1	1	1	0
2. Relevance of course content to the industrial /organizational needs	1	2	0	0
3. Promotion of learning experience of the students for skill development	0	2	1	0
4. Focus on projects	1	2	0	0
5. Weightage given to Practical and field work component	1	2	0	0
6. Ability to contribute to achieve the goals and objectives of the organization	1	2	0	0
7. Weightage given to Employability/ Entrepreneurship	1	1	1	0
8. Ability to work in a group and leadership skills	2	1	0	0
9. Overall rating	1	2	0	0

Graph 3: Employers' Feedback Analysis



The consolidated result of Employer's feedback on curriculum for the academic year 2021-22 shown in Table 3 and Graph 3 reveal that the employers have given a good rating to the learning experience of students for the skill development, excellent rating to employability or entrepreneurship.



[Handwritten Signature]
PRINCIPAL
TELANGANA SOCIAL WELFARE
RESIDENTIAL DEGREE COLLEGE
FOR WOMEN: NIRMAL.

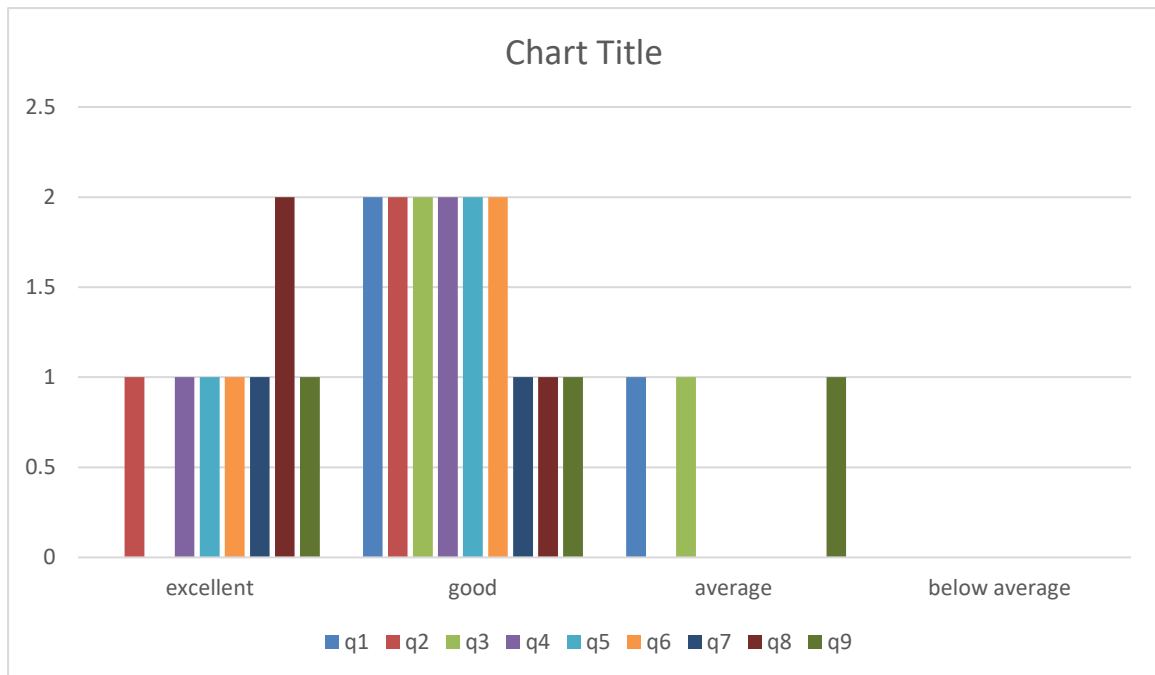
Academic Year 2019-20
Number of Respondents – 03

Employers' feedback on curriculum is evaluated using a format consisting of 7 dimensions on a four point scale. The assigned weights are Excellent-4, Good-3, Average-2, Below Average-1. The responses of the employers for the academic year 2019-20 are collected and tabulated and the conclusions are presented below.

Table 4: Employers' Feedback on Curriculum


Parameters	4	3	2	1
	Excellent	Good	Average	Below Average
1. Suitability of curriculum design	0	2	1	0
2. Relevance of course content to the industrial /organizational needs	1	2	0	0
3. Promotion of learning experience of the students for skill development	0	2	1	0
4. Focus on projects	1	2	0	0
5. Weightage given to Practical and field work component	1	2	0	0
6. Ability to contribute to achieve the goals and objectives of the organization	1	2	0	0
7. Weightage given to Employability/ Entrepreneurship	1	1	1	0
8. Ability to work in a group and leadership skills	2	1	0	0
9. Overall rating	1	1	1	0

Graph 4: Employers' Feedback Analysis



The consolidated result of Employer’s feedback on curriculum for the academic year 2021-22 shown in Table 4 and Graph 4 reveal that the employers have given a good rating to the learning experience of students for the skill development, average rating to employability or entrepreneurship.




PRINCIPAL
TELANGANA SOCIAL WELFARE
RESIDENTIAL DEGREE COLLEGE
FOR WOMEN: NIRMAL.

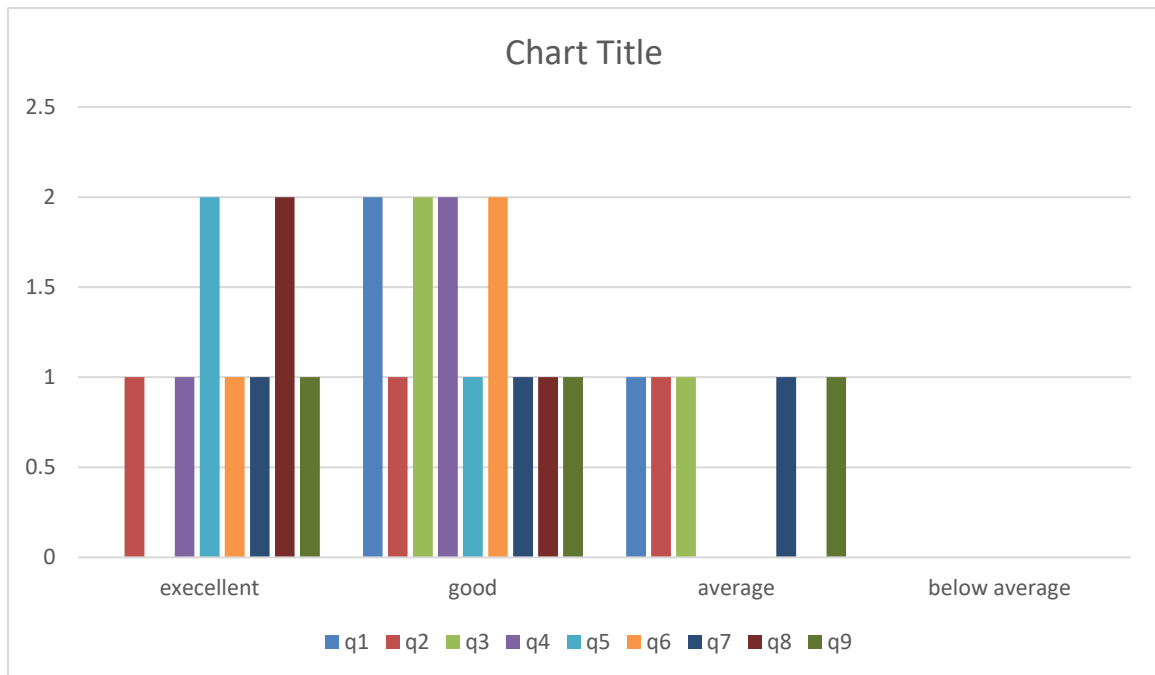
Academic Year 2018-19
Number of Respondents – 03

Employers' feedback on curriculum is evaluated using a format consisting of 7 dimensions on a four point scale. The assigned weights are Excellent-4, Good-3, Average-2, Below Average-1. The responses of the employers for the academic year 2018-19 are collected and tabulated and the conclusions are presented below.

Table 5: Employers' Feedback on Curriculum

Parameters	4	3	2	1
	Excellent	Good	Average	Below Average
1. Suitability of curriculum design	0	2	1	0
2. Relevance of course content to the industrial /organizational needs	1	1	1	0
3. Promotion of learning experience of the students for skill development	0	2	1	0
4. Focus on projects	1	2	0	0
5. Weightage given to Practical and field work component	2	1	0	0
6. Ability to contribute to achieve the goals and objectives of the organization	1	2	0	0
7. Weightage given to Employability/ Entrepreneurship	1	1	1	0
8. Ability to work in a group and leadership skills	2	1	0	0
9. Overall rating	1	1	1	0

Graph 5: Employers' Feedback Analysis



The consolidated result of Employer’s feedback on curriculum for the academic year 2018-19 shown in Table 5 and Graph 5 reveal that the employers have given a good rating to the learning experience of students for the skill development, average rating to employability or entrepreneurship.



[Handwritten Signature]
PRINCIPAL
TELANGANA SOCIAL WELFARE
RESIDENTIAL DEGREE COLLEGE
FOR WOMEN: NIRMAL.

Report on Analysis of Feedback on Curriculum Collected from Alumni

Alumni's feedback on curriculum allows them to comment on the various aspects of curriculum. This provides us with various suggestions which can be forwarded to the University for further improvement in curriculum if required.

The feedback from Alumni is obtained through structured questionnaire which included 7 questions on dimensions related to effectiveness on curriculum.

A four point scale with weights Excellent-4, Good-3, Average-2 and Below average-1 are assigned.



**PRINCIPAL
TELANGANA SOCIAL WELFARE
RESIDENTIAL DEGREE COLLEGE
FOR WOMEN: NIRMAL.**

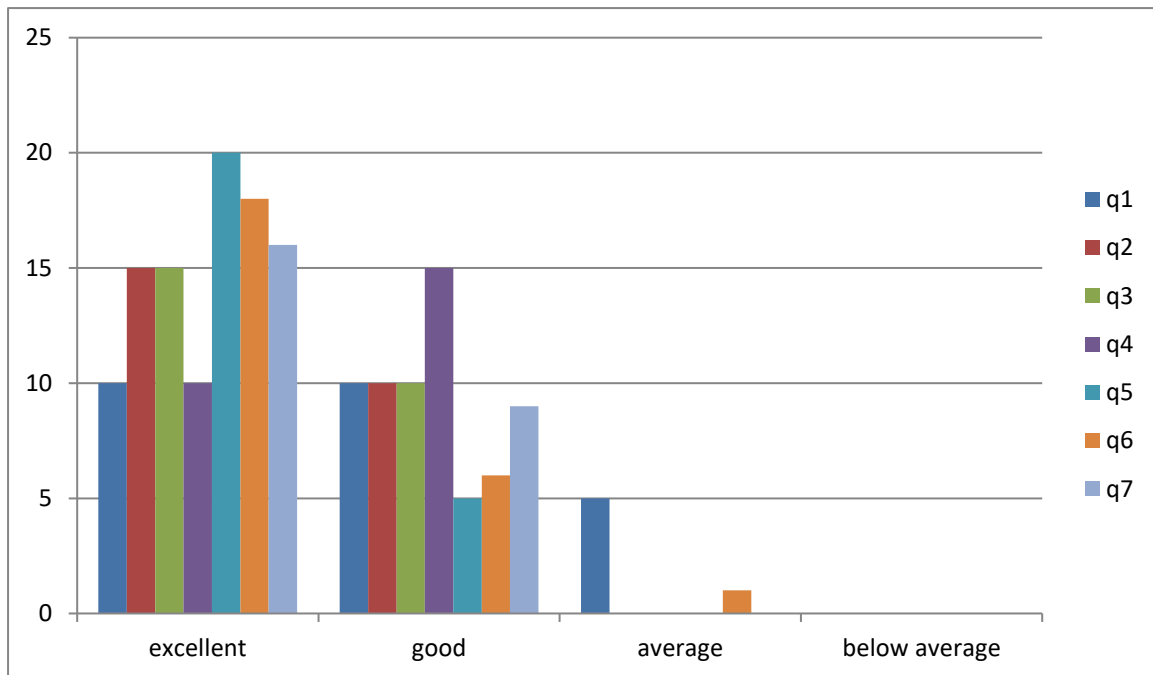
Academic Year 2022-23
Number of Respondents – 25

Alumni's feedback on curriculum is evaluated using a format consisting of 7 dimensions on a four point scale. The assigned weights are Excellent-4, Good-3, Average-2, Below Average-1. The responses of the students for the academic year 2022-23 are collected and tabulated and the conclusions are presented below.

Table 1: Alumni's Feedback on Curriculum

Parameters	4	3	2	1
	Excellent	Good	Average	Below Average
1. Relevance of courses in curriculum in attaining the required skill competencies to your job	10	10	5	0
2. Relevance of the courses in the curriculum and its contents	15	10	0	0
3. Relevance of courses in the curriculum in relations to latest technology or emerging trends in industry	15	10	0	0
4. Coverage of curriculum in catering to your professional needs	10	15	0	0
5. Objectives stated and relevance to the course content	20	05	0	0
6. Value added courses offered to you in the curriculum in developing disposition in your career	18	6	1	0
7. Relevance of curriculum in career orientation	16	9	0	0

Graph 1: Alumni's Feedback Analysis



The consolidated result of Alumni's feedback on curriculum for the academic year 2022-23 shown in Table 1 and Graph 1 reveal that the Alumni has shown positivity with the implementation of the curriculum in skill development and the value added courses in career development.



PRINCIPAL
TELANGANA SOCIAL WELFARE
RESIDENTIAL DEGREE COLLEGE
FOR WOMEN: NIRMAL.

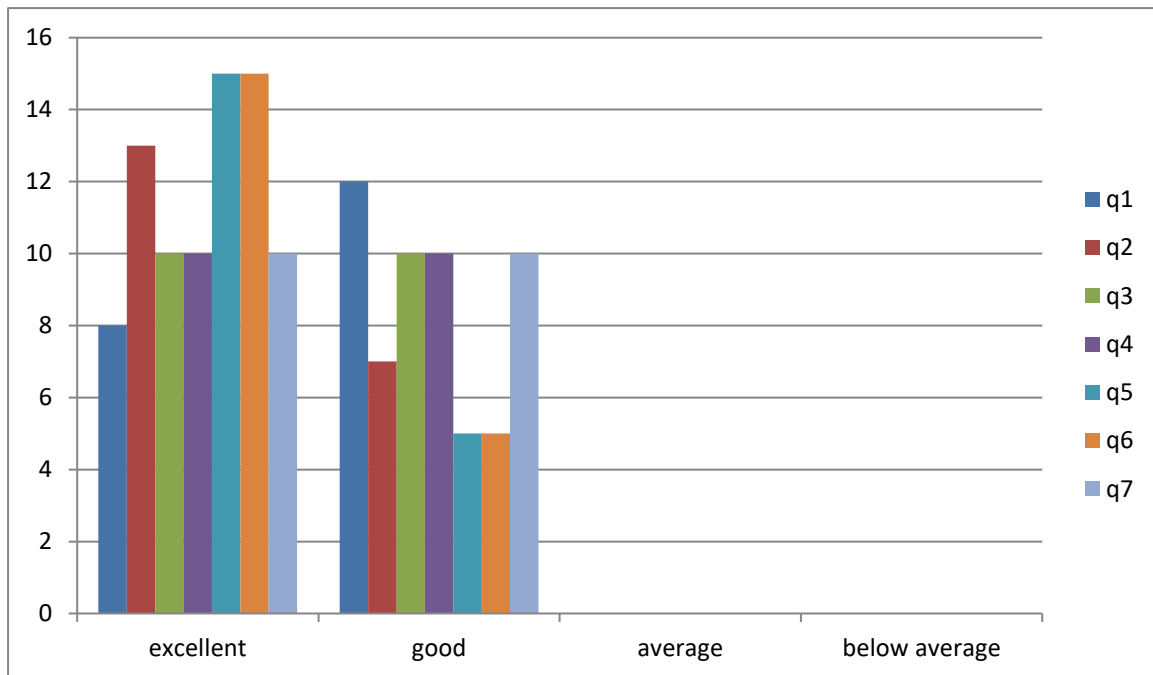
Academic Year 2021-22
Number of Respondents – 20

Alumni's feedback on curriculum is evaluated using a format consisting of 7 dimensions on a four point scale. The assigned weights are Excellent-4, Good-3, Average-2, Below Average-1. The responses of the students for the academic year 2021-22 are collected and tabulated and the conclusions are presented below.

Table 2: Alumni's Feedback on Curriculum


Parameters	4	3	2	1
	Excellent	Good	Average	Below Average
1. Relevance of courses in curriculum in attaining the required skill competencies to your job	8	12	0	0
2. Relevance of the courses in the curriculum and its contents	13	7	0	0
3. Relevance of courses in the curriculum in relations to latest technology or emerging trends in industry	10	10	0	0
4. Coverage of curriculum in catering to your professional needs	10	10	0	0
5. Objectives stated and relevance to the course content	15	5	0	0
6. Value added courses offered to you in the curriculum in developing disposition in your career	15	5	0	0
7. Relevance of curriculum in career orientation	10	10	0	0

Graph 2: Alumni's Feedback Analysis



The consolidated result of Alumni's feedback on curriculum for the academic year 2021-22 shown in Table 2 and Graph 2 reveal that the Alumni has given excellent rating for the value added courses in career development and a good rating for curriculum for skill competencies for employment.




PRINCIPAL
TELANGANA SOCIAL WELFARE
RESIDENTIAL DEGREE COLLEGE
FOR WOMEN: NIRMAL.

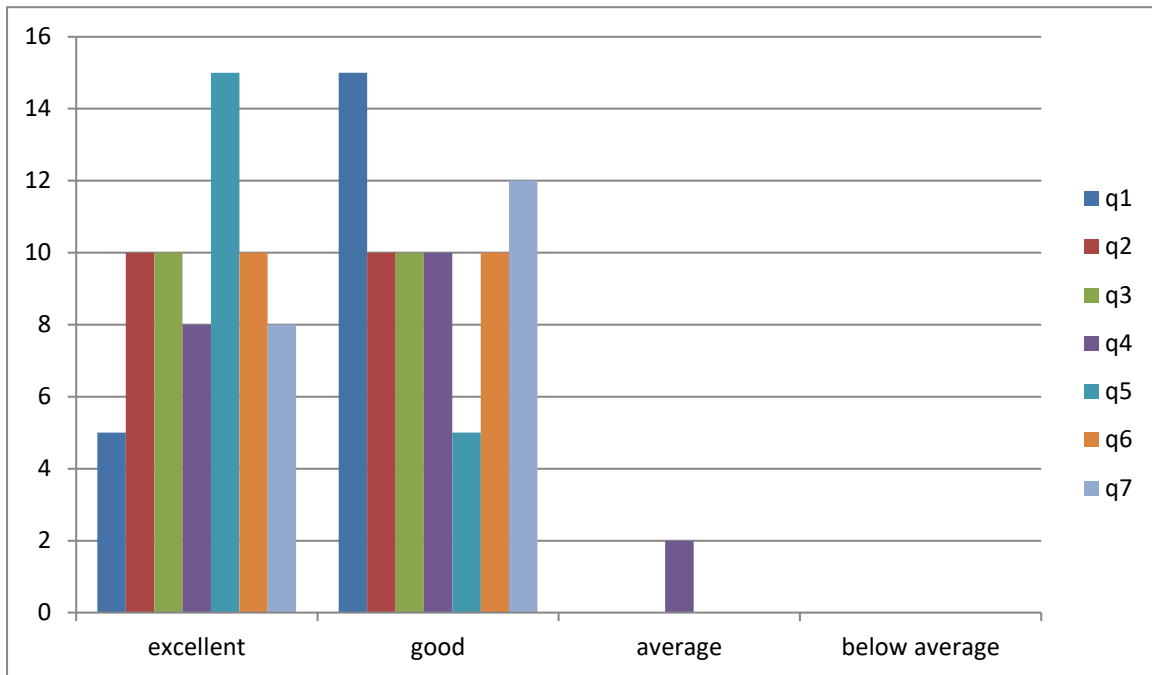
Academic Year 2020-21
Number of Respondents – 20

Alumni's feedback on curriculum is evaluated using a format consisting of 7 dimensions on a four point scale. The assigned weights are Excellent-4, Good-3, Average-2, Below Average-1. The responses of the students for the academic year 2020-21 are collected and tabulated and the conclusions are presented below.

Table 3: Alumni's Feedback on Curriculum


Parameters	4	3	2	1
	Excellent	Good	Average	Below Average
1. Relevance of courses in curriculum in attaining the required skill competencies to your job	5	15	0	0
2. Relevance of the courses in the curriculum and its contents	10	10	0	0
3. Relevance of courses in the curriculum in relations to latest technology or emerging trends in industry	10	10	0	0
4. Coverage of curriculum in catering to your professional needs	8	10	2	0
5. Objectives stated and relevance to the course content	15	5	0	0
6. Value added courses offered to you in the curriculum in developing disposition in your career	10	10	0	0
7. Relevance of curriculum in career orientation	8	12	0	0

Graph 3: Alumni's Feedback Analysis



The consolidated result of Alumni's feedback on curriculum for the academic year 2020-21 shown in Table 3 and Graph 3 reveal that the Alumni has given a good rating for curriculum for skill competencies for employment and relevance of curriculum in career orientation




PRINCIPAL
TELANGANA SOCIAL WELFARE
RESIDENTIAL DEGREE COLLEGE
FOR WOMEN: NIRMAL.


Academic Year 2019-20
Number of Respondents – 20

Alumni's feedback on curriculum is evaluated using a format consisting of 7 dimensions on a four point scale. The assigned weights are Excellent-4, Good-3, Average-2, Below Average-1. The responses of the students for the academic year 2019-20 are collected and tabulated and the conclusions are presented below.

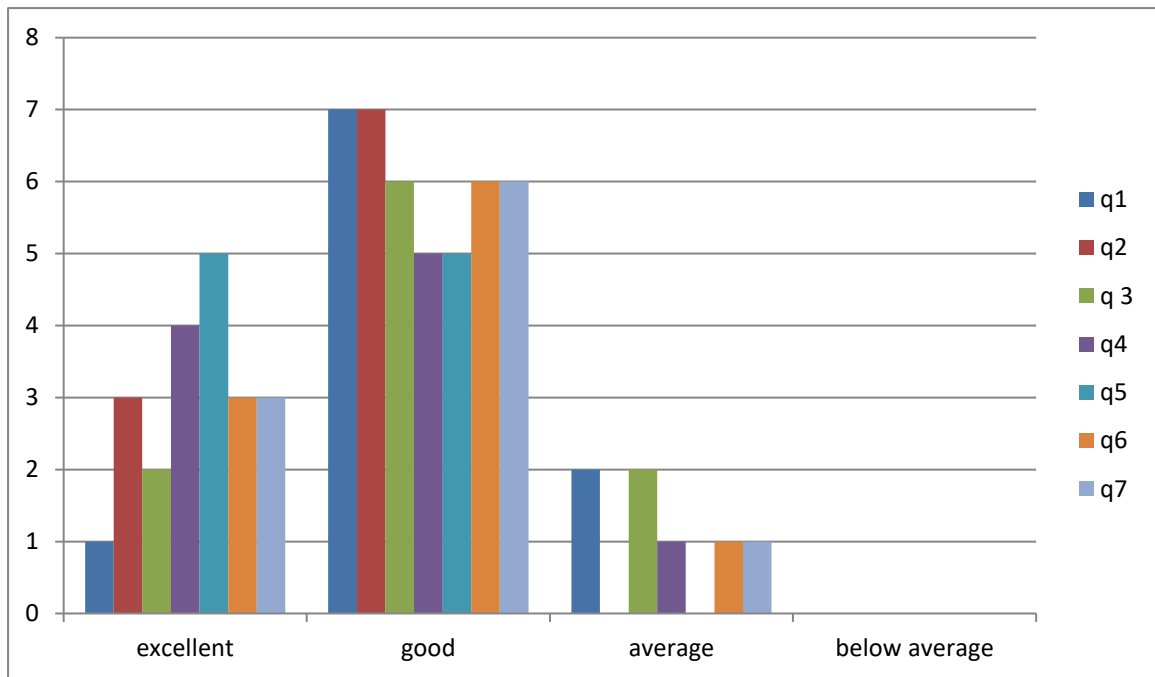
Table 4: Alumni's Feedback on Curriculum

Parameters	4	3	2	1
	Excellent	Good	Average	Below Average
1. Relevance of courses in curriculum in attaining the required skill competencies to your job	1	7	2	0
2. Relevance of the courses in the curriculum and its contents	3	7	0	0
3. Relevance of courses in the curriculum in relations to latest technology or emerging trends in industry	2	6	2	0
4. Coverage of curriculum in catering to your professional needs	4	5	1	0
5. Objectives stated and relevance to the course content	5	5	0	0
6. Value added courses offered to you in the curriculum in developing disposition in your career	3	6	1	0
7. Relevance of curriculum in career orientation	3	6	1	0




PRINCIPAL
TELANGANA SOCIAL WELFARE
RESIDENTIAL DEGREE COLLEGE
FOR WOMEN: NIRMAL.

Graph 4: Alumni's Feedback Analysis



The consolidated result of Alumni's feedback on curriculum for the academic year 2019-20 shown in Table 4 and Graph 4 reveal that the Alumni has given a good rating for curriculum for skill competencies for employment and value added courses for disposition of career.



[Handwritten Signature]
PRINCIPAL
TELANGANA SOCIAL WELFARE
RESIDENTIAL DEGREE COLLEGE
FOR WOMEN: NIRMAL.

Academic Year 2018-19
Number of Respondents – 10

Alumni's feedback on curriculum is evaluated using a format consisting of 7 dimensions on a four point scale. The assigned weights are Excellent-4, Good-3, Average-2, Below Average-1. The responses of the students for the academic year 2018-19 are collected and tabulated and the conclusions are presented below.

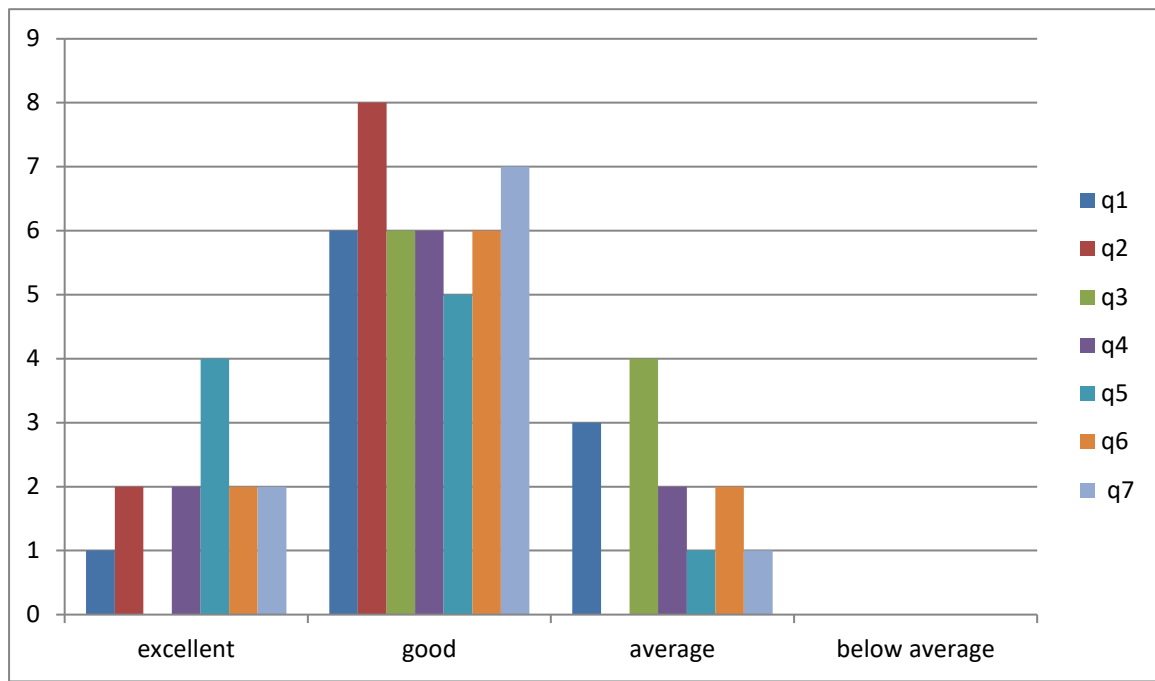
Table 5: Alumni's Feedback on Curriculum

Parameters	4	3	2	1
	Excellent	Good	Average	Below Average
1. Relevance of courses in curriculum in attaining the required skill competencies to your job	1	6	3	0
2. Relevance of the courses in the curriculum and its contents	2	8	0	0
3. Relevance of courses in the curriculum in relation to latest technology or emerging trends in industry	0	6	4	0
4. Coverage of curriculum in catering to your professional needs	2	6	2	0
5. Objectives stated and relevance to the course content	4	5	1	0
6. Value added courses offered to you in the curriculum in developing disposition in your career	2	6	2	0
7. Relevance of curriculum in career orientation	2	7	1	0



PRINCIPAL
TELANGANA SOCIAL WELFARE
RESIDENTIAL DEGREE COLLEGE
FOR WOMEN: NIRMAL.

Graph 5: Alumni's Feedback Analysis



The consolidated result of Alumni's feedback on curriculum for the academic year 2018-19 shown in Table 5 and Graph 5 reveal that the Alumni has given a good rating for curriculum for skill competencies for employment, value added courses for disposition of career and relevance of curriculum in career orientation



[Handwritten Signature]
PRINCIPAL
TELANGANA SOCIAL WELFARE
RESIDENTIAL DEGREE COLLEGE
FOR WOMEN: NIRMAL.



Telangana Social Welfare Residential Degree College For Women, Nirmal

Dist: Nirmal 504106



Sri E. Venkateshwarlu
MA, B.Ed, M. Phil.
Principal

Mobile: +91-7995660879
E-Mail:prl-rdcw-nrml-swrs@telangana.gov.in

ACTION TAKEN REPORT ON FEEDBACK

Based on the feedback collected from Students, Teachers, Alumni and Employers, authorities have taken an action on the issues that have been put forward in the feedback. Accordingly, action plan has been implemented with the support of administration and teachers. Following is the yearwise summary report.

2022-23

Students' feedback has revealed that there is more need for ICT based education and accordingly the administration has provided smart boards and projectors and made arrangements for providing better teaching-learning experience. Analysis of feedback from alumni suggested the need for knowledge related to latest software and accordingly, the Dept., of Computer Science has taken an initiation to conduct workshops on Internet of Things for better improvement of students' knowledge.

2021-22

Analysis of the Teacher's feedback have indicated that many of the staff members have requested to depute the staff to participate in refresher course of the Academic staff college, Osmania University, Hyderabad and accordingly the administration has taken the initiatives for encouraging the lecturers to participate in refresher courses, faculty development courses and workshops organized by reputed institutions. Administration also encourages the faculty to enroll themselves in NPTEL and MOOCS courses.



PRINCIPAL
TELANGANA SOCIAL WELFARE
RESIDENTIAL DEGREE COLLEGE
FOR WOMEN: NIRMAL.

2020 – 21

Students' feedback has revealed that they had difficulty with online mode of education. As majority of the students belonged to weaker section and are from remote places, they had difficulty in having smart devices, had technical difficulty and students have felt the difficulty to cope up with online mode of education. Hence, the faculty are informed to send the soft copy of study material to students through whatsapp so that they can understand the concepts better.

Teachers' feedback has revealed that the teachers have faced the technical difficulty with online teaching via Zoom, Google meet and Webex. Engaging with Microsoft Teams have brought much resolution to the problems for online education.

2019-20


Analysis from students' feedback have revealed that while some students are aspiring for higher education, some are willing to join in various jobs to be financially stable and support themselves. Administration has decided to arrange Placement and Career guidance programmes with the help of career guidance cell in association with TASK. Based on the feedback from employers' there is a need to train the students in improving their communication skills and the accordingly, the Dept., of English were advised to conduct special classes for communication skills.

2018-19

As per the feedback from students' there is a need for conducting remedial classes for future learners and special classes for slow learners and likewise the concerned department Heads are informed to make arrangement for the conduct of respective classes in the additional time.

Students have also requested for PG coaching classes. Hence, faculty of all the departments are informed to conduct PG coaching classes so that they could attempt the entrance exams in the best possible way and secure seats in prestigious institutions for postgraduate education.




**PRINCIPAL
TELANGANA SOCIAL WELFARE
RESIDENTIAL DEGREE COLLEGE
FOR WOMEN: NIRMAL.**